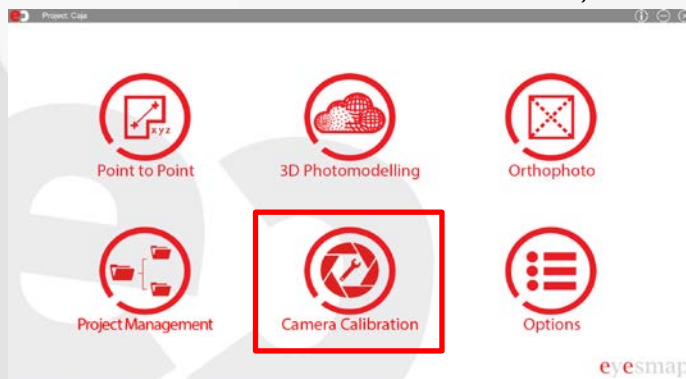


Look at the following VideoTutorials for start working:

1. The first that the user will need to learn, is how calibrating a camera



Link of visualization:

<https://www.youtube.com/watch?v=Dqz5EwNYyOY>

2. How using the module of Point to Point



Link of visualization:

<https://www.youtube.com/watch?v=0wq1d6bAob8>

3. How using the module of 3D Photomodelling



Link of visualization:

<https://www.youtube.com/watch?v=9FApx58LLfw>

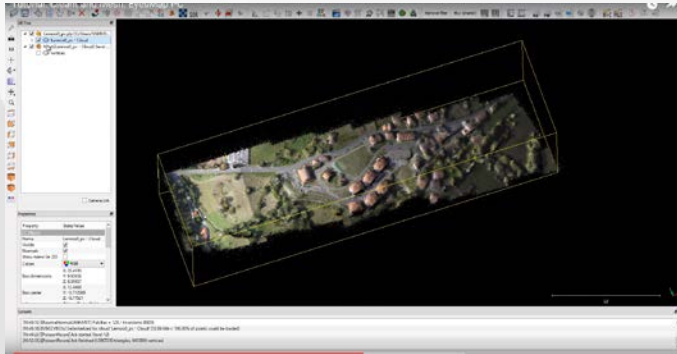
4. How creating a Real Ortophoto



Link of visualization:

<https://www.youtube.com/watch?v=I0w0Ld4KDq8>

- Learn how to clean and mesh a 3D model after you have created it



Link of visualization:

<https://www.youtube.com/watch?v=jlxhe1o5yq8>

*support@ecapture.es*